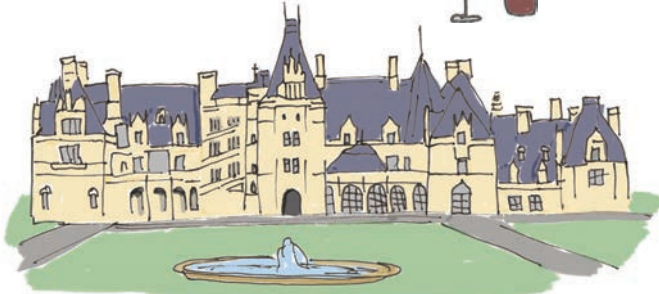


The Biltmore House
Gardens, Stable and Winery



Chimney Rock
State Park



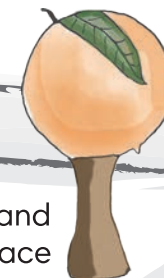
Tryon International
Equestrian Center



Lake Bowen

Cherokee Foothills Scenic Highway

Gaffney Peach and
Outlet Marketplace



Chapman
Cultural Center



Barnet Park
and Amphitheatre



The Grain
District



RJ Rockers
Brewery

Farmer's Market



Hatcher Garden
and Woodland Preserves

Camp Croft



Home to the Carolina
Panthers and NASCAR



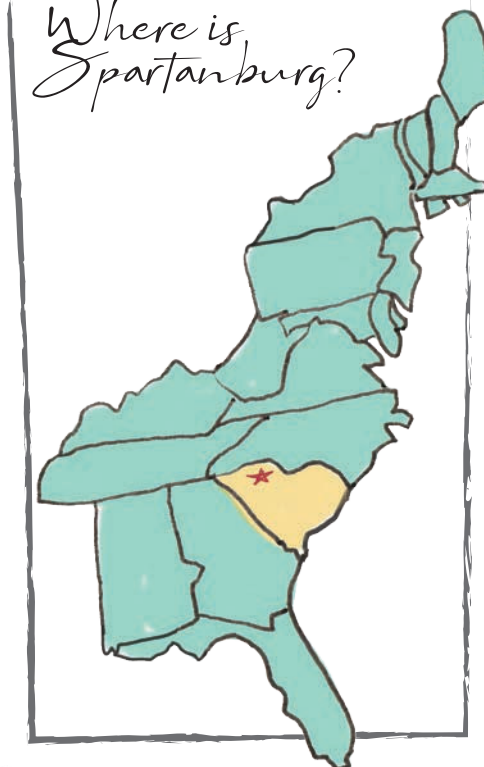
PNC Music Pavilion
and Ampitheatre



US National
Whitewater Center



Where is
Spartanburg?



Beach trip!

Myrtle Beach, Hilton Head
and Savannah

4 hrs

Spartanburg

Crossroads of the South

Asheville
1 hr

I-26

I-85

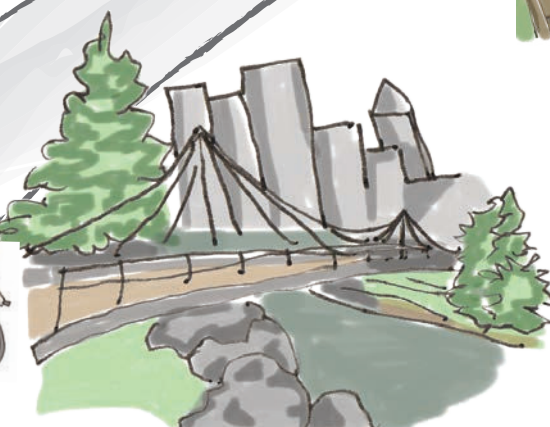
I-85

I-26

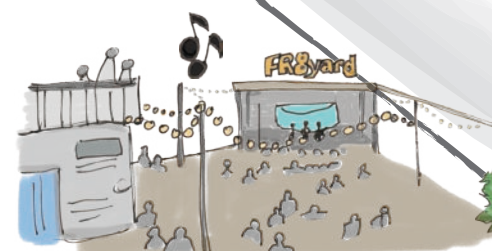
Greenville
20 mins

Home to the The Greenville Drive
- Minor League Baseball Team
and the Swamp Rabbits - Ice Hockey

Falls Park on the Reedy
"Top 10 Best Parks in the US" by Trip Advisor



Fr8yard Outdoor Biergarten
and Live Music



The Rail Trail



Morgan Square



Greenville-Spartanburg
International Airport



Atlanta
2.5 hrs



Charleston
3 hrs



See for yourself
www.sherman.edu/visit

Seeing is Believing

The best way to experience Sherman College and South Carolina's beautiful Upstate area is to visit. Take a tour of our campus, meet the faculty, talk with students, get the answers to your questions and get a real picture of the Sherman College experience. You'll see for yourself why Sherman College is the ideal place for your chiropractic education.



Schedule a Visit: www.sherman.edu/visit

Join us for a campus visit or attend one of our Showcase Sherman Weekend events – we'll even help out with travel and lodging. We offer a one-night hotel stay for campus visits and a three-night stay for Showcase Sherman Weekend, and travel vouchers for visitors who live 200+ miles from Spartanburg. To find out if you meet our reimbursement requirements, please contact your admissions representative for details. We look forward to meeting you!



Learn about
Showcase Sherman Weekends
www.sherman.edu/showcase

We're READY
for YOU!



2020 Springfield Road | P.O. Box 1452 | Spartanburg, SC 29304 | (864) 578-8770

Spartanburg: There's Only One.

We all agree – Spartanburg is a great place to live! Sperling's BestPlaces ranked Spartanburg as South Carolina's best city. Headlight Data recently ranked our city as the #8 Small Metro nationwide for millennial population growth. Money magazine called Spartanburg one of "Four Booming Locales Where You Can Get a Job and Live Easy," and SmartMoney recognized our city as one of the five best real estate buys in the country. **There's only one Spartanburg. We call it home.**

Fill Your Calendar

Allow time to explore the beautiful, historical city of Spartanburg and the surrounding areas. Something special is happening here year-round – Spartanburg just wants you to have fun! Popular events include:

- Chapman Cultural Center arts programs
- Music on Main (Thursdays, Apr-Aug)
- Art Walk (Third Thursdays)
- Jazz on the Square (Fridays, April, May, Sept, Oct)
- Spring Fling (May)
- Red, White & Boom (July)
- Spartanburg International Festival (Oct)
- Ghost Tours (Fridays and Saturdays, Sept-Nov)
- Dickens of a Christmas (Dec)
- Skating on the Square (Nov-Jan)

The Great Outdoors

Perched in the foothills of the Blue Ridge Mountains and blessed with a climate that makes outdoor activities possible year-round, Spartanburg is a city that loves to play. For biking enthusiasts, Spartanburg is home to miles of paved and off-road bike trails, and hosts the Spartanburg Regional Criterium and the Assault on Mt. Mitchell every May. Our skate park is a popular destination and our tree-lined neighborhoods provide countless jogging routes.

- Lawson's Fork Creek is lined with parks and woodlands; rocky shoals and natural waterfalls can be found throughout its course.
- East of downtown, Cottonwood Trail is a walking trail along part of Lawson's Fork that includes picnic areas, a raised path over an extensive wetlands area and access to sporadic sandbars.
- Hatcher Garden and Woodland Preserve is a welcome oasis of natural beauty; thick woods and a flower garden serve as a haven for birds and other wildlife.
- Spartanburg boasts more than a dozen public parks, and recreation in the area includes kayaking, golfing, horseback riding, swimming, fishing, camping and mountain biking.



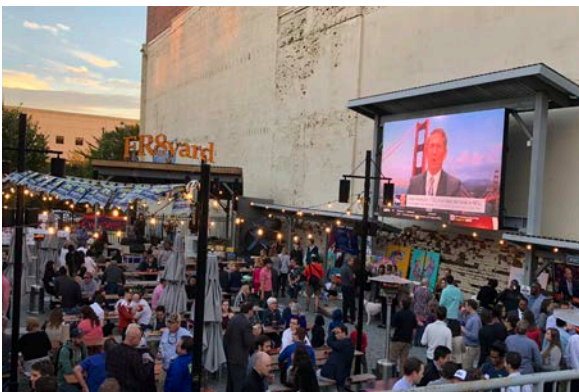
- Shop at area farms and markets for locally grown produce, grass-fed choices and much more. Visit a corn maze, take a hayride and pick your own produce. You'll find countless opportunities to enjoy nature's bounty.

Arts, Culture & Fun

- Downtown Spartanburg enjoys a high concentration of cultural facilities and entertainment options. This area includes 21 indoor live performance venues; nine outdoor performance venues; 43 galleries/exhibit spaces; 38 murals and other public art displays; five museums; 64 studios and workshops; six historic sites; 15 green spaces and arboreta; and 1,335 events and festivals open to the public.

- At the heart of Spartanburg's Cultural District, Chapman Cultural Center offers events, performances, exhibits, group tours and classes that bring people together to discover, experience and celebrate the performing and visual arts, science and history.

- Amidst the towering silos of the historic Grain District, an arts and entertainment area west of Morgan Square, you'll find a variety of distinctive restaurants, a wine bar, microbrewery, coffee bar and the renowned Hub City Bookshop.



A College Town

Spartanburg is home to more than 15,000 students attending seven colleges in the area – Converse College, Sherman College of Chiropractic, Spartanburg Community College, Spartanburg Methodist College, Edward Via College of Osteopathic Medicine, the University of South Carolina Upstate, and Wofford College. With the highest per capita college student population of any major city in South Carolina, you'll never have a shortage of fun things to do with social events, athletics, culture, community service projects and more.

Abundant Housing

You have many options when looking for a place to live in Spartanburg. Whether you rent an apartment or a house, or even purchase a home, the area has something for everyone. Our Admissions and Student Affairs Offices will help you find a place that suits your needs and lifestyle.

Affordable Living

Spartanburg is one of the most beautiful places to live and one of the most affordable. In fact, the cost of living in Spartanburg is approximately 11% below the national average, providing residents with more opportunities for recreation, events and family fun.



Did You Know?



- BMW's only North American car plant is located in Spartanburg County, where all X3, X4, X5, X6 and X7 Sports Activity Vehicles are manufactured.

- The Marshall Tucker Band, a Southern rock band that created 29 albums and had several hits, was formed in Spartanburg in the early 1970s.

- The Magnolia Street Train Depot stands as a reminder of Spartanburg's nickname "the Hub City," for the many transportation routes that converged here from cities throughout the region. It is now home to the AMTRAK station and the Hub City Railroad Museum.

- The first nationally recognized "Bike Town" in South Carolina, Spartanburg is a community that embraces bicycling for its positive impact on quality of life and economic development of area.



- Spartanburg B-Cycle is the first bike sharing system in the Southeast, with self-service bike rental stations in areas like the Rail Trail and downtown's Morgan Square.

- Spartanburg's renowned Beacon Drive-In, famous for its sweet iced tea, onion rings and burgers, has been featured on the Food Network show Diners, Drive-Ins and Dives.



- Spartanburg is home to the world headquarters and research facility for Milliken & Company, one of the largest privately held textile and chemical manufacturers in the world.

- Hollywild Animal Park, a local zoo filled with animal celebrities, creates a dazzling drive-through holiday light display with millions of sparkling lights adorning the nearly 100-acre park. A trip through the Enchanted Deer Forest lets you feed the deer, zebra, donkeys and more from the comfort of your car.

The Four Seasons



Spartanburg is located in the foothills of the beautiful Blue Ridge Mountains. Our mild climate, with its four distinct seasons, provides the ideal weather for outdoor activities year-round.

- Average Annual Rainfall 49"
- Average Annual Snowfall 2"
- Average Sunshine 225 days

Averages Temperatures (°F)

Jan.	33/51	July	69/89
Feb.	37/57	Aug	69/88
March	44/65	Sept.	64/82
April	51/74	Oct.	51/72
May	59/80	Nov.	43/63
June	67/87	Dec.	37/54

www.sherman.edu/visit



Welcome to Spartanburg

Spartanburg, South Carolina is the ideal place to learn and live with great weather, plenty of outdoor activities, community events and a low cost of living. Located in South Carolina's Upstate region, Spartanburg is the sixth largest city in the state. The city of 40,000, which is part of a larger metropolitan area of 300,000, is known for its beauty, quality of life and friendly people.

Location, Location

Spartanburg is in the middle of everything! Conveniently located at the intersections of I-26 and I-85, at what some call "the crossroads of the new South," you won't have far to go if the big city beckons.

- Only 20 minutes from the captivating city of Greenville, SC
- One hour from metropolitan Charlotte, NC, and the thriving mountain city of Asheville, NC
- 2 ½ hours from the buzz of Atlanta, GA and three hours from the historical charm of Charleston, SC
- Four hours from the fun, sun and sand of coastal towns like Myrtle Beach, Hilton Head and Savannah



www.sherman.edu/visit